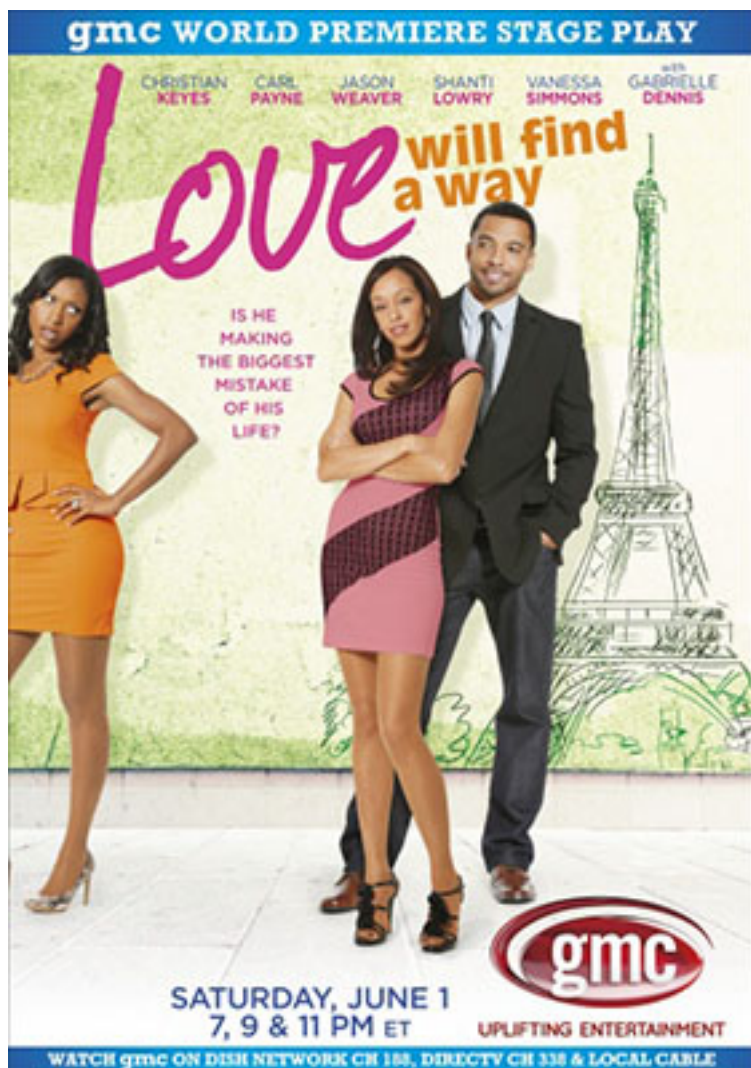


GMC TV presents the original world premiere stage play 'Love Will Find A Way'

Written by



(BPRW) ATLANTA – GMC TV, will present the original World Premiere Stage Play "Love Will Find A Way" (www.watchgmctv.com/stageplay, #StagePlay), the conclusion of a two-part romantic dramedy starring Christian Keyes (*What's Done In The Dark*, *Madea Goes To Jail*), Gabrielle Dennis ("The Game"), Jason Weaver (*Drumline*, *ATL*), Vanessa Simmons ("Run's House," *Dysfunctional Friends*), Carl Payne ("Martin," "The Game"), Shanti Lowry ("The Game," "The Closer") and Suveria Mota (*Las Pandillas de Los Angeles*). "Love Will Find A Way" makes its world television premiere exclusively on UP on Saturday, June 1 at 7 p.m., 9 p.m. and 11 p.m. ET/PT.

GMC TV will officially change its name to UP on June 1, so "Love Will Find A Way" represents the first original Stage Play to air on the newly-named network. The network's new name communicates a clear sense of its unique brand position, which has always been, and will continue to be "Uplifting Entertainment."

Based on an original screenplay written by Siddeeqah "Sid" Powell (GMC's NAACP Image

GMC TV presents the original world premiere stage play 'Love Will Find A Way'

Written by

Award nominated "Somebody's Child") and directed by Drue Powell (*Somebody's Child*, "For Richer or Poorer" Series), "Love Will Find A Way" is a sequel to May's Original World Premiere Stage Play "What Would You Do For Love," premiering on May 11, 2013.

Beginning to enjoy his new millions in an open manner, average single guy and fitness trainer Reggie Brooks (Christian Keyes) travels to Paris, France with his life-of-the-party childhood friend Troy Drummond (Jason Weaver), Troy's spirited wife Piper (Vanessa Simmons) and her sister Paula (Gabrielle Dennis), a self-absorbed certified matchmaker. While Paula has quietly discovered feelings for her client Reggie along the way, he decides to give his relationship with match Lucky James (Shanti Lowry) a chance since she's apparently changed her mind about wanting kids. Still, Paula becomes suspicious when some new facts come out about her former client (and now romantic rival) Lucky – begging the question, "Is she hiding something?" So, now what happens when Reggie discovers he has not one, but two viable romantic candidates? With a level head; close friends; entertaining co-workers Stanley (Carl Payne) and Raquel (Suveria Mota); a big bank account; and even bigger heart, somehow "Love Will Find A Way" for Reggie.

"'Love Will Find A Way' is a smart, entertaining blend of inspiring romance, drama and laughs," says Leslie Glenn Chesloff, GMC TV's executive vice president of programming. "We are thrilled to present another two-part series of World Premiere Stage Plays to our viewers, who continue to be huge fans of this unique form of programming only found on UP. We were also pleased to work again with the talented Sid Powell, director Drue Powell and this extraordinary cast as we usher in UP's introductory weekend of programming."